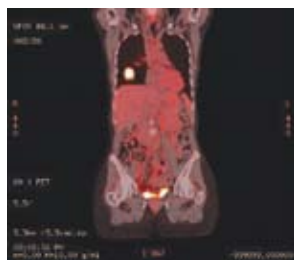


# Imagine ...



*By superimposing CT scans and PET images, a 3-D view of cancer is produced, giving doctors far more information to plan and monitor accurate treatment.*

## **What is your cancer risk?**

Some breast, ovarian, and colon cancers occur because of genetic factors passed from one generation to the next. If two or more members of your extended family have had cancer of any kind, please call about our Family Risk Evaluation Program at **215.710.4511**.

a precise new 3-D view of cancer that targets treatment *more effectively than ever before.*

Imaging technology that transforms the way specialists can pinpoint, track and respond to cancer is here today at St. Mary Regional Cancer Center. 3-D images from PET/CT scans provide a far more accurate view of exactly where cancer cells are located and how they respond to treatment. Often, this detailed information dramatically changes the course of therapy — showing doctors when to proceed more aggressively, or when invasive procedures can be avoided. Even when cancer attacks the body's most complicated areas, PET/CT paints an accurate picture so treatment can be planned and monitored more effectively.

St. Mary experts provide comprehensive cancer services, solving the most complex cases using advanced technology and treatments never before imagined. And behind every cutting-edge service we provide, you'll find our compassionate care. A far cry from the routine — but exactly what you'd expect from St. Mary.

Visit [www.StMaryHealthcare.org](http://www.StMaryHealthcare.org).

For a physician referral, call 215.710.5888.



***It's your health. Expect more.***  
1201 Langhorne-Newtown Rd. Langhorne, PA 19047